

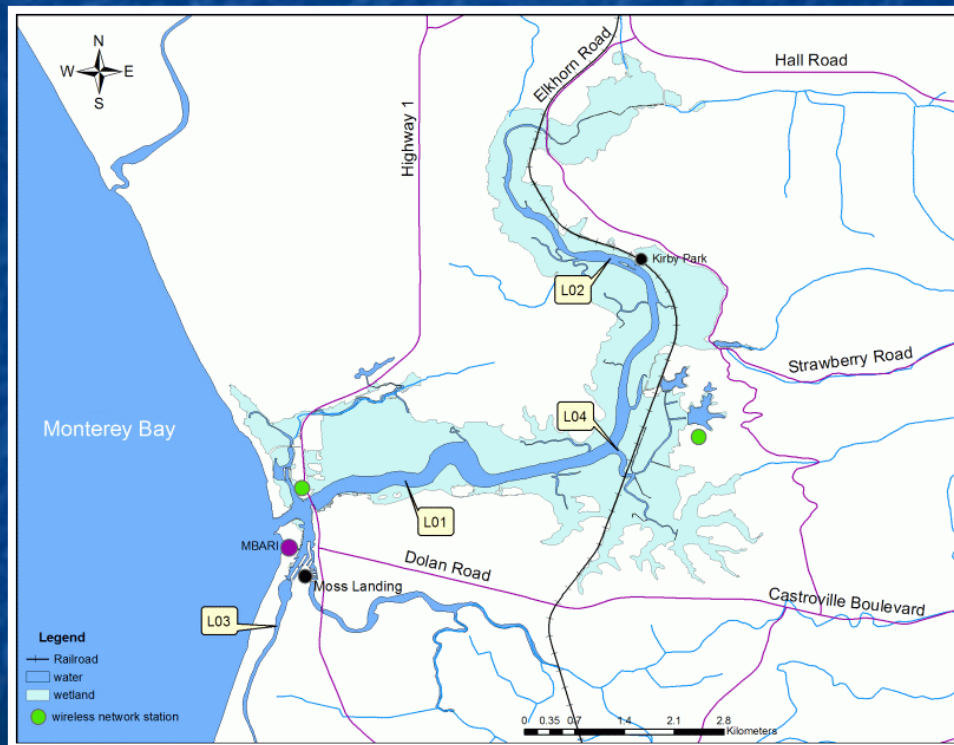
LOBO LAN

A Wireless LAN for Elkhorn Slough

<http://www.mbari.org/lobo>

A Three Tier System:

- Wireless Ethernet Bridges (Cirronet SEM2410) distribute IP connectivity to fixed sites within the Elkhorn Slough watershed.
- Colocated Access Points (Cirronet SNAP2410) manage incoming connections from the deployed moorings and route their traffic to a MBARI designed server application running on a shore-side UNIX machine.
- A MBARI designed low-power mooring controller and OEM Wireless LAN Module (Cirronet WIT2410) are used to log and telemeter instrument data from each mooring.



LOBO LAN

A Wireless LAN for Elkhorn Slough

<http://www.mbari.org/lobo>

Reliability:

- A Frequency Hopping Spread Spectrum (FHSS) radio topology, in the 2.4GHz ISM band, minimizes data loss caused by jamming and interference and maximizes bandwidth sharing.
- A MBARI implementation of the ZMODEM file transfer protocol ensures end-to-end data integrity between the local and remote file systems.

Expandibility:

- The system allows for a seamless and secure extension of the local MBARI network to remote IP and serial devices, e.g., weather station, webcam, ect...

Status:

- The L03 mooring is currently networked and is making hourly data transfers.
- The three remaining moorings are currently deployed in Elkhorn Slough and will be brought onto the network during July and August of 2005.

Technical Contact: Luke Coletti, MBARI
coletti@mbari.org